

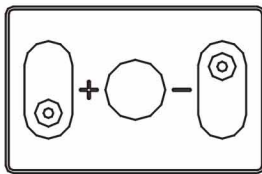
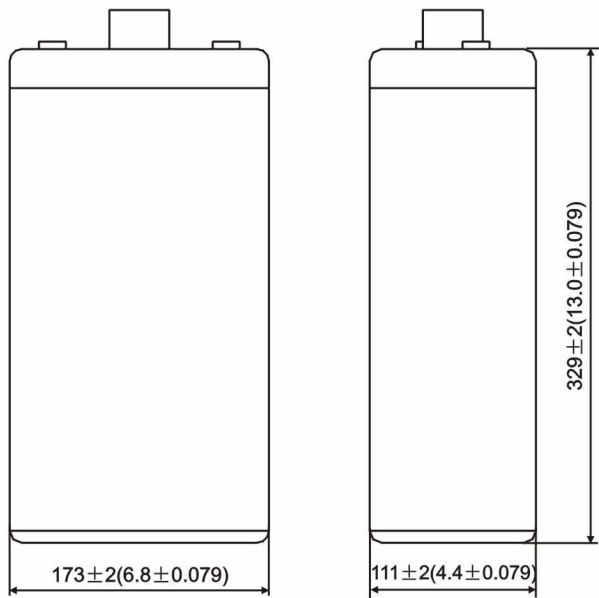


NON-SPILLABLE SEALED RECHARGEABLE BATTERY

2V, 200Ah

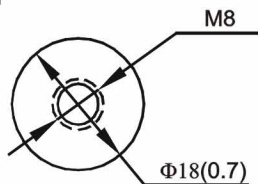
☆ SPECIFICATION	☆ CHARACTERISTICS
● NOMINAL VOLTAGE : 2 V	● CAPACITY 25 °C / 77 °F
● NOMINAL CAPACITY(10 hrs) : 200.0 Ah	10 hr @ 20A :200 Ah
● DIMENSIONS	5 hr @ 32 A :160 Ah
TOTAL HEIGHT : 365 mm (14.4 inches)	3 hr @ 50 A :150 Ah
CONTAINER HEIGHT : 329 mm (13.0 inches)	1 hr @ 110A : 110 Ah
LENGTH : 173 mm (6.8 inches)	1 C @ 200 A : 100Ah
WIDTH : 111 mm (4.4 inches)	● INTERNAL RESISTANCE(25°C , 77 °F) : 0.67 m Ω
● WEIGHT : APPROX 14.5 kg (32 lbs)	● CHARGING VOLTAGE (25°C , 77 °F)
● MAX DISCHARGE CURRENT : 380 A (5 sec)	STANDBY USE : 2.25±0.02 V/CELL
● STANDARD TERMINALS : RECEPTACLE TERMINAL	: (-3.3mV / °C / CELL)
● CONTAINER MATERIAL : GENERAL GRADE ABS	CYCLE USE : 2.4±0.05 V/CELL
	: (-5 mV / °C / CELL)
	● MAX CHARGING CURRENT : 30 A

☆ Dimensions



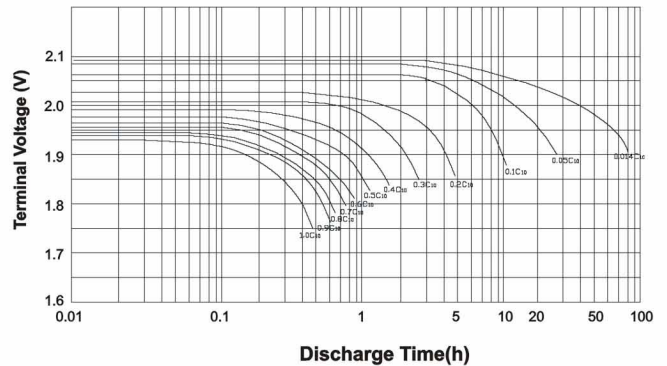
mm(inch)

☆ Terminal



mm(inch)

Discharge Characteristics 25 °C (77 °F)



OPEN CIRCUIT VOLTAGE VS REMAINING CAPACITY

AT 25°C (77°F)

